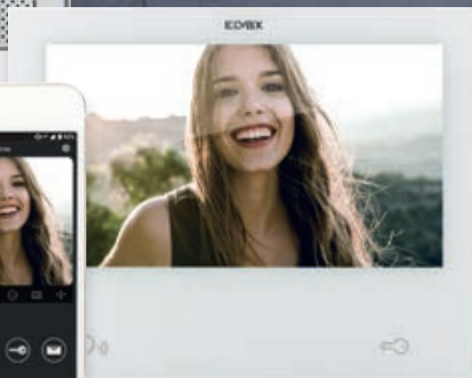
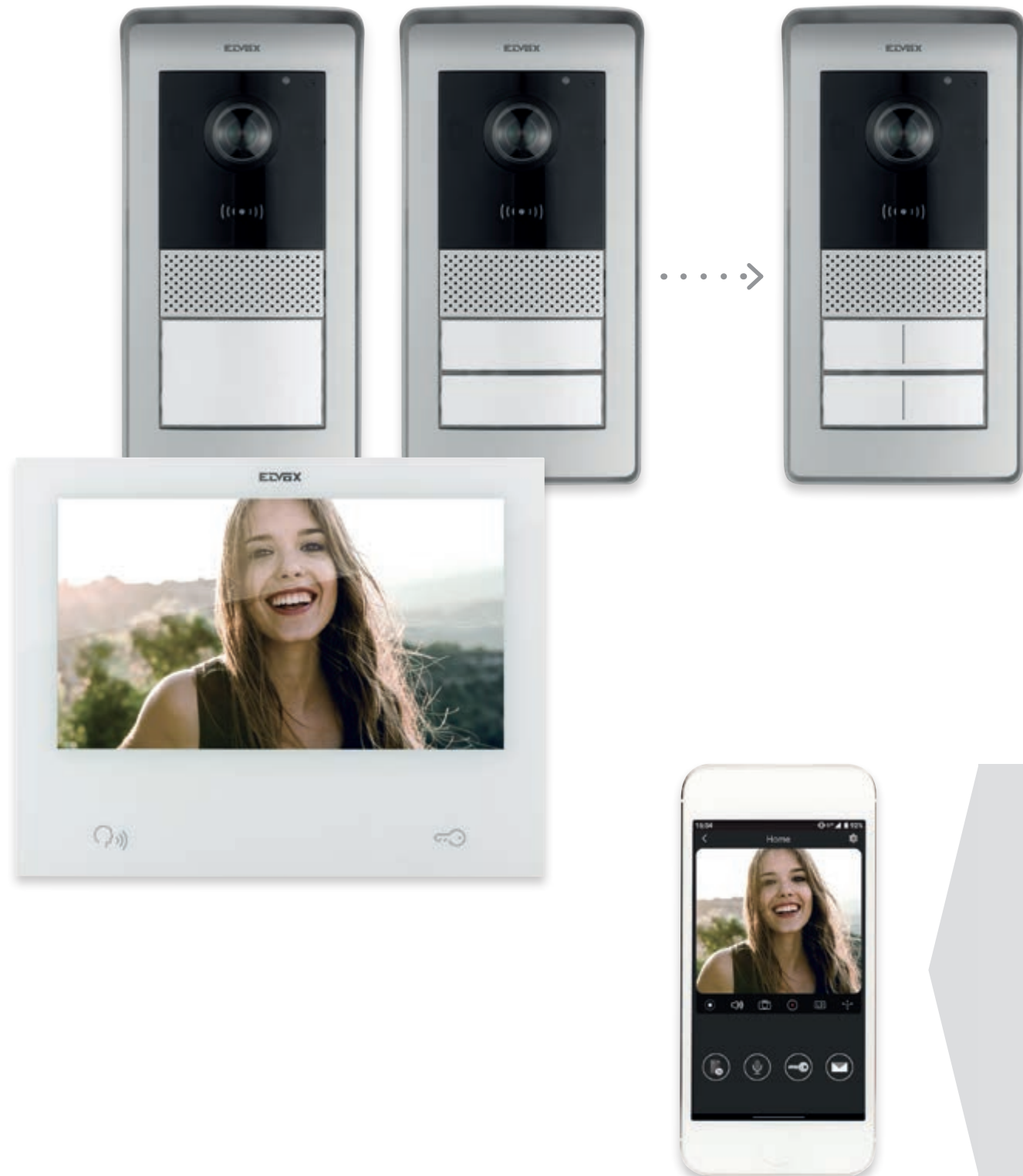


**EDV6X DOOR ENTRY****one-family****two-family****View Door
App****VIEW**
IoT smart life

IP over 2 wires.
High performance and
simple wiring.



The performance of IP technology comes together with the simplicity of 2-wire wiring.

High-performance and easy to install, **with just 2 wires**, the video door entry kits allow you to check who is ringing at your door, even when you're out. Thanks to the **monitor with integrated Wi-Fi** and to the **View Door App**, you can receive and manage video door entry calls directly from your smartphone or tablet.

Our video door entry kits all boast **Full-HD video quality** (2 Mpx resolution), a **wide recording angle** and allow up to 3 calls to be made simultaneously, connect sensors and select the related scenarios, as well as use transponder cards. The one- or two-family kits are expandable, to create systems **for up to four families**, with 4 indoor stations per apartment, 4 outdoor stations, 8 cameras per apartment and 20 shared cameras, visible from all the apartments in the system.

Everything is always under control from your smartphone or tablet.

The **View Door App** is simple and boasts a user-friendly graphic interface, allowing you to **answer video door entry calls** from your smartphone or tablet, to **control the lock** in your home and to **view the pictures transmitted by the outdoor station and by any cameras** installed and connected.



View Door
App

The IP over 2 wires kits.



one-family

K40980

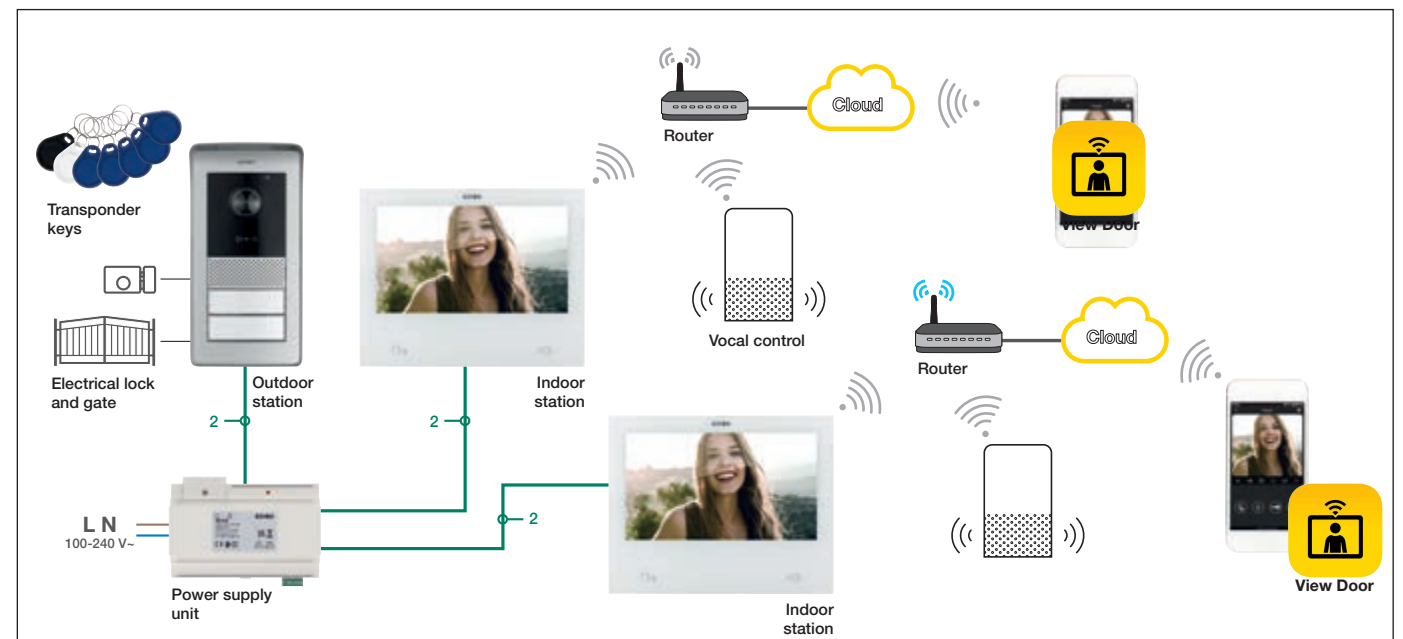
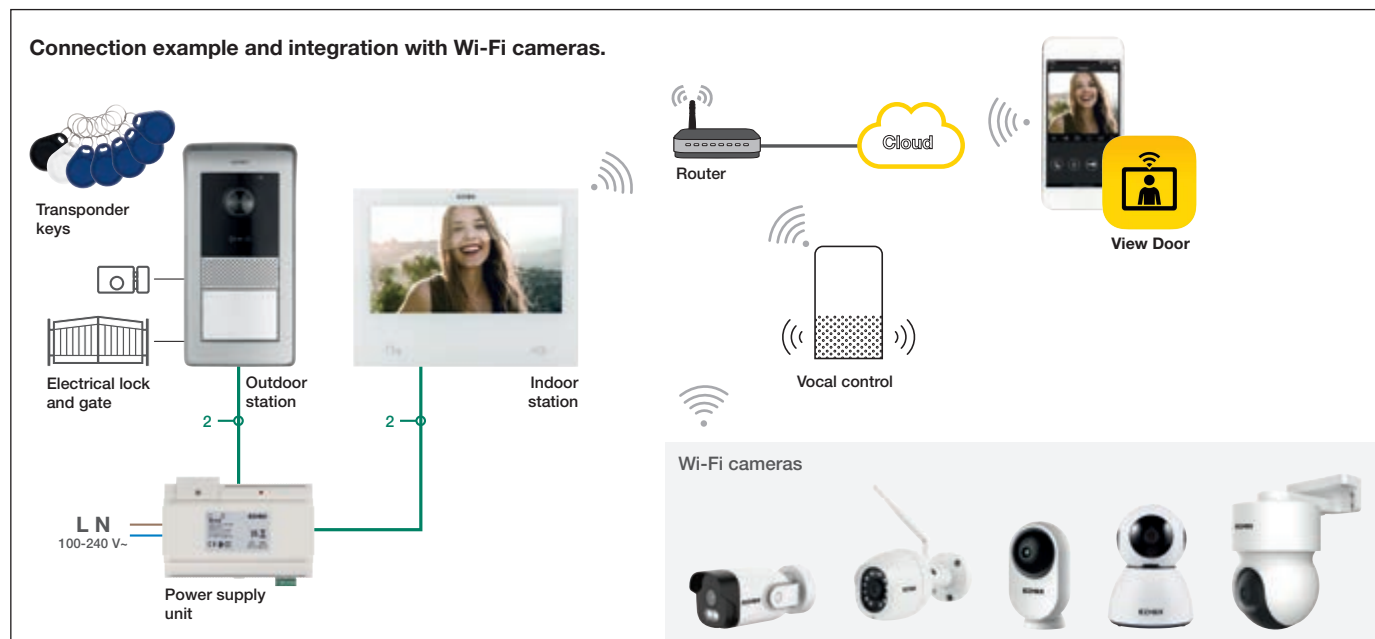
IP over 2 wires surface mounting video door entry kit containing: 1 hands-free touch screen monitor, integrated Wi-Fi for call repetition on smartphone with dedicated App, 7" LCD colour display, complete with bracket for surface mounting (40980.M), 1 audio/video entrance panel with rain-proof frame configurable for 1, 2 or 4 families, RFID for access control, with relay output configurable as NO or NC for electrical lock or voltage-free contact (40980.P), 7 Mifare coloured RFID cards (40169), 1 power supply unit (40105).



two-family

K40981

IP over 2 wires surface mounting video door entry kit containing: 2 hands-free touch screen monitors, integrated Wi-Fi for call repetition on smartphone with dedicated App, 7" LCD colour display, complete with bracket for surface mounting (40980.M), 1 audio/video entrance panel with rain-proof frame configurable for 1, 2 or 4 families, RFID for access control, with output configurable as NO or NC for electrical lock or voltage-free contact (40980.P), 7 Mifare coloured RFID cards (40169), 1 power supply unit (40105).

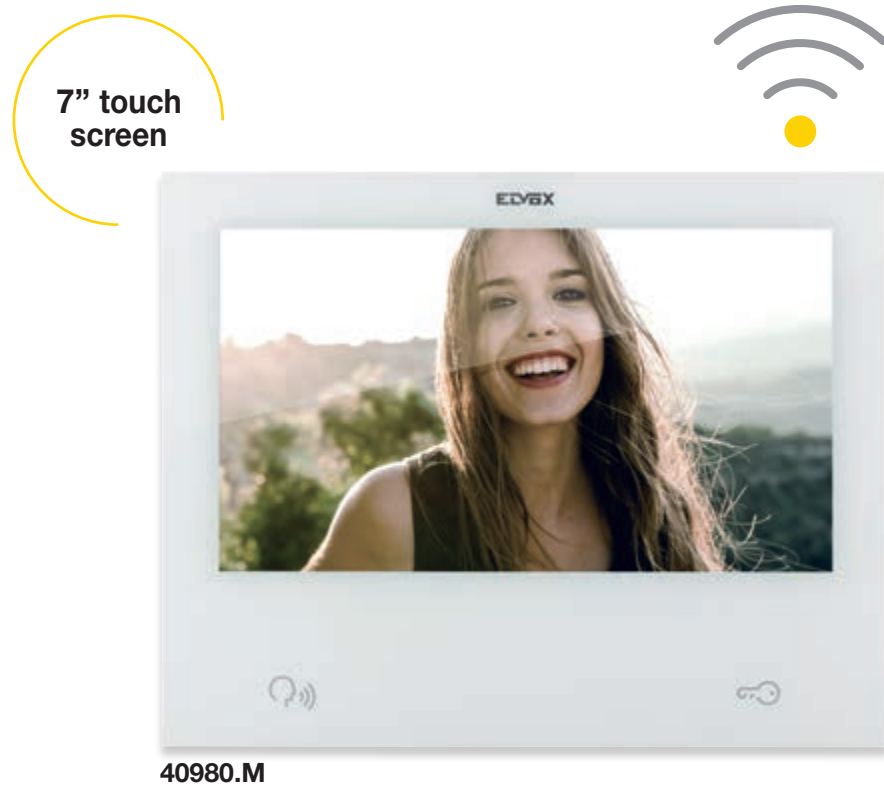


12 good reasons to choose our video door entry kits.

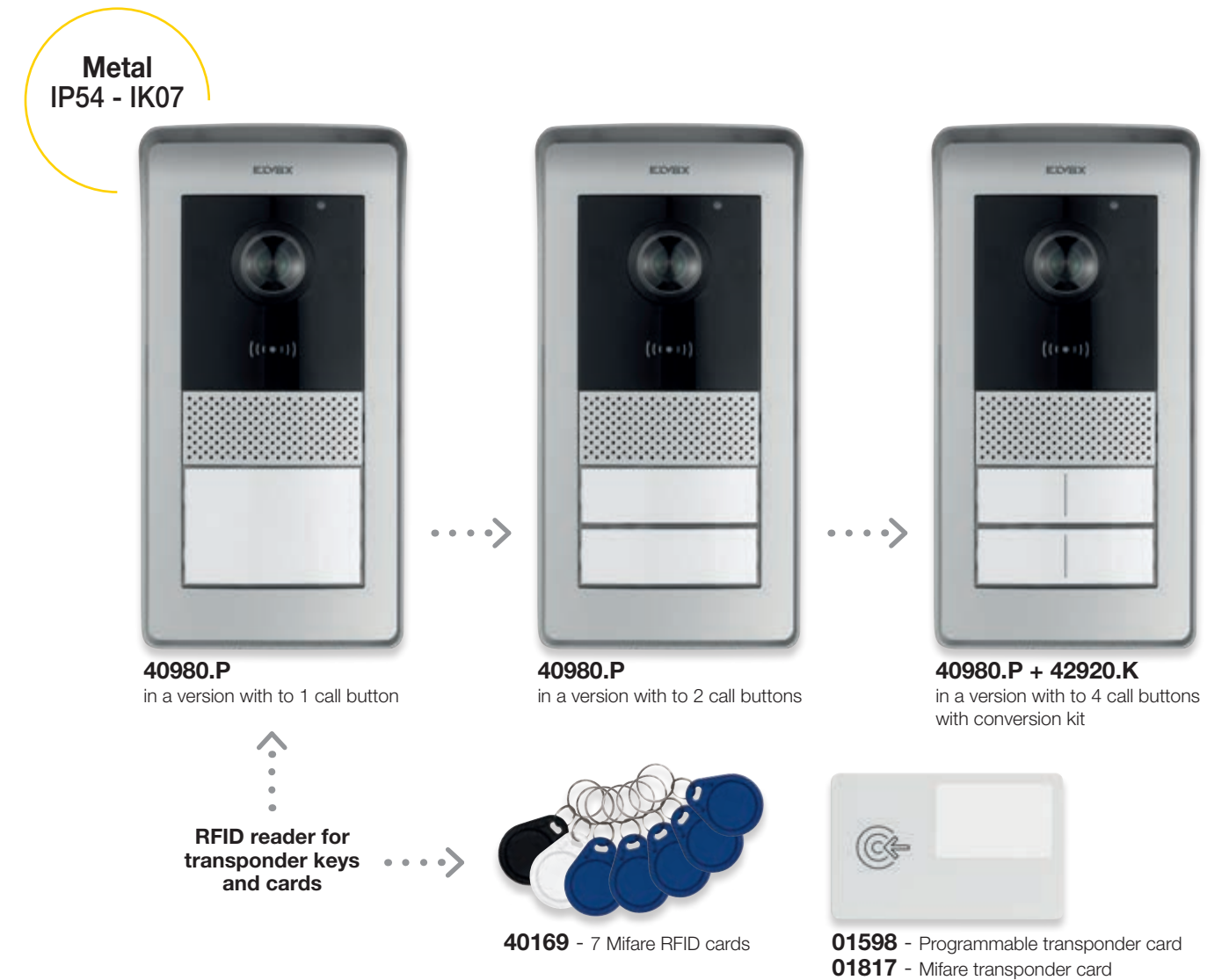
- 1 **Ready to use**
No need for programming, simply connect the devices with just 2 wires.
- 2 **Connection with just 2 wires**
Just 2 wires are required to connect the outdoor station, the power supply unit and the indoor station.
- 3 **Expandable**
The system can be expanded by connecting up to **4 indoor stations** for each home and **4 outdoor stations**.
- 4 **Intercom**
Calls and conversations between indoor stations installed within the same system are possible, even between different homes.
- 5 **Multiple communications**
UP to **3 simultaneous conversations are possible**, between indoor stations and outdoor stations and between different indoor stations.
- 6 **Call repetition**
Indoor stations with additional output for call repetition.
- 7 **Voice assistants**
Compatible with **Amazon Alexa** and **Google** voice assistants.
- 8 **View Door App**
To receive and manage video door entry calls directly from your smartphone or tablet.
- 9 **Scenarios**
4 scenarios available (at home, away, night, customised), with alert notification sending to be combined with the 8 indoor station inputs for sensors.
- 10 **Access control**
Access control via RFID card reader in the outdoor station (up to 10 different transponder keys).
- 11 **IP wired and Wi-Fi camera connection***
Up to 8 cameras per home and up to 20 shared cameras, visible from all the homes in the system.
- 12 **2-wire system retrofits**
When refurbishing existing 2-wire systems, the indoor and outdoor stations can simply be replaced, maintaining the same wiring.

* IP wired cameras supported: Outdoor bullet (4621.2812BA) and outdoor dome (4622.2812BA).
Wi-Fi cameras supported: Outdoor bullet (46237.028B and 46237.040A), indoor PT (46239.036C and 46239.040A) and outdoor PT, (46241.030B).

Indoor station with integrated Wi-Fi.



Outdoor station.



Outdoor station with integrated Wi-Fi

Thanks to integrated Wi-Fi, the indoor station communicates with smartphones and tablets. And video door entry calls and scenarios can be managed anywhere.



Intercom indoor stations

You can communicate from any indoor station to another indoor station connected to the same system. The call can also be addressed to a specific indoor station.



Video and picture recording

Automatically or in manual mode, you can capture **stills and videos** of the caller at the outdoor entrance panel.



Micro SD card from 8 to 128 GB

The micro SD card (not included) allows you to capture **stills, videos** and perform an encrypted **Backup** of the system for possible resetting.



Call repetition

Indoor stations with additional output for call repetition.



Scenarios

Management of up to **4 scenarios** (at home, away, night, customised), with alert notification sending to indoor station and to smartphone with the View Door App.



Sensors

8 customisable inputs available on the indoor stations for the connection of sensors (gas, water, intrusion, etc.) and one 12 VDC input to be combined with the scenarios.



IP wired and Wi-Fi cameras

UP to 8 cameras per home and up to 20 shared cameras can be viewed, visible from all the homes in the system. Auto-search and configuration of the IP wired cameras are possible from the indoor station.



Multi-language menu

The display menu can be programmed in 8 different languages: Italian, English, French, Spanish, German, Greek, Portuguese and Dutch.



Update information

There is a screen available on the indoor stations signalling the new functions introduced with the latest update.



Rain guard and name plate

Entrance panels fitted with rain-proof frame, back-lit name plate and surface mounting accessories.



Up to 4 push buttons

Entrance panels designed to be configured with 4 push buttons in a double row for installation in small residential facilities.



Backlighting of name plate and icons

The LED backlighting makes the name plates clearly visible, as well as the backlit icons which signal the function under way.



Protection degree IP54 and IK07

IP54 protection **against dust and water** sprays and IK07 **protection against mechanical** impact.



160° wide-angle camera

Equipped with colour camera with **2 Mpx**, wide-angle lens with 160° horizontal and 85° vertical recording angle.



Full-duplex audio with Echo Canceller and noise reduction

Echo Canceller means you can have a natural, two-way conversation, automatically avoiding annoying audio feedback (Larsen effect). You will hear loud and clear thanks to the **Noise Reduction** function.



Multi-language voice messages

Multi-language voice messages in 8 different languages (Italian, English, French, Spanish, German, Greek, Portuguese and Dutch).



Lock and auxiliary services

An electric lock can be powered directly and an auxiliary service can be connected to the relay output with a programmable activation time.



Access control

Access control via RFID card reader in the outdoor station (up to 10 different transponder keys).

Additional IP wired and Wi-Fi cameras.

Up to 8 cameras per home and up to 20 shared cameras can be connected to each IP over 2 wires video door entry kit, visible from all the homes in the system. The cameras can either have an Ethernet connection (IP protocol) or Wi-Fi.

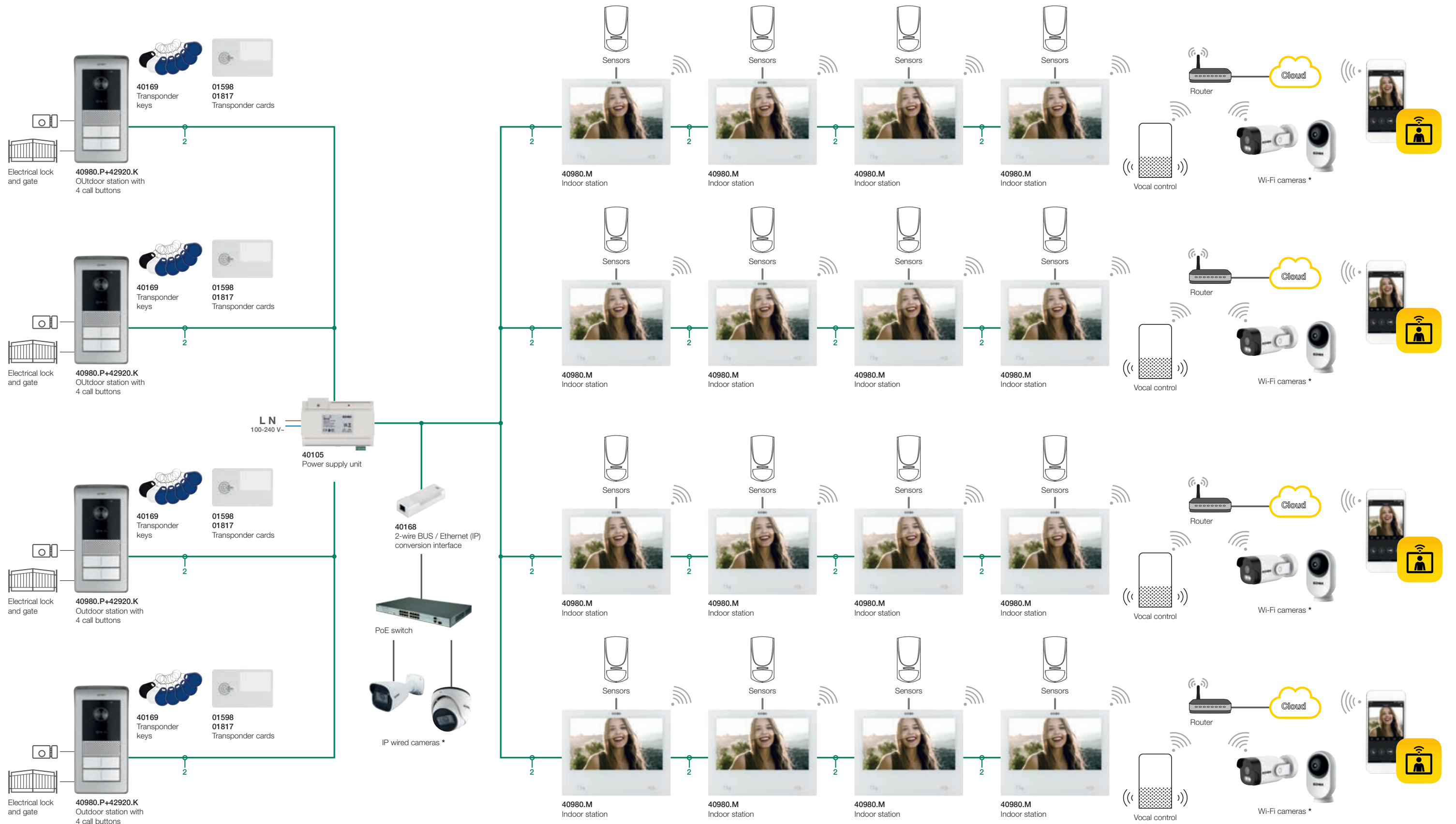
Compatible cameras	IP wired cameras		Wi-Fi cameras		Motorised Wi-Fi cameras		
4621.2812BA Bullet camera	4622.2812BA Dome camera	46237.028B Bullet camera	46237.040A Bullet camera		46239.040A PT camera	46239.036C PT camera	46241.030B PT camera
Resolution	Full HD (2 Megapixels, 1920x1080)	Full HD (2 Megapixels, 1920x1080)	Full HD (2 Megapixels, 1920x1080)	Full HD (2 Megapixels, 1920x1080)	Full HD (2 Megapixels, 1920x1080)	3 Megapixels (2304x1296)	Full HD (2 Megapixels, 1920x1080)
Control	Via smartphone	Via smartphone	Via smartphone	Via smartphone and smart speaker	Via smartphone and smart speaker	Via smartphone	Via smartphone
Night vision - colour			✓				✓
Night vision - in B/N	✓	✓	✓	✓	✓	✓	✓
Illuminator - nighttime	Up to 30 m	Up to 30 m	Up to 10 m	Up to 10 m	Up to 10 m	Up to 10 m	Up to 10 m
Lens	Varifocal with field of view from 33° to 102°	Varifocal with field of view from 33° to 102°	Fixed focus with field of view of 120°.	Fixed focus with field of view of 90°	Fixed focus with field of view of 96°	Fixed focus with field of view of 110°	Fixed focus with field of view of 130°
Micro SD card slot (not included)	256 GB with protected footage recording	256 GB with protected footage recording	128 GB with protected footage recording	128 GB with protected footage recording	128 GB with protected footage recording	128 GB with protected footage recording	128 GB with protected footage recording
Deterrent function			White light flash and siren, configurable				White light flash and siren, configurable
Smart video analysis	✓	✓					
Smart tracking					✓	✓	✓
Pan-Tilt					Horizontal and vertical movement	Horizontal and vertical movement	Horizontal and vertical movement
Preset					6 settable points	6 settable points	6 settable points
Privacy mode			✓		✓	With disappearing lens	✓
Installation	Indoor/outdoor (IP67) and wall/ceiling mounting with bracket included	Indoor/outdoor (IP67) and ceiling mounting	Indoor/outdoor (IP65) and wall/ceiling mounting with bracket included	Indoor/outdoor (IP65) and wall/ceiling mounting with bracket included	Indoor and ceiling mounting with bracket included	Indoor and table mounting	Indoor/outdoor (IP65) and wall/ceiling mounting with bracket included



40168

Conversion interface with two connectors: one for 2-wire BUS and one for Ethernet 10/100 Mbit/s. To be connected between power supply unit and indoor station or between power supply unit and outdoor station, in order to make the IP wired cameras visible to all the homes in the system.

Maximum IP over 2 wires system extension.



* Up to 8 cameras per home and up to 20 shared cameras, visible from all the homes in the system.

Energia Positiva. Insieme

